

# Utah's current and future water resources: A story told through maps

Tim Beach, Utah State University  
 Research Mentor: Sarah Null, Utah State University

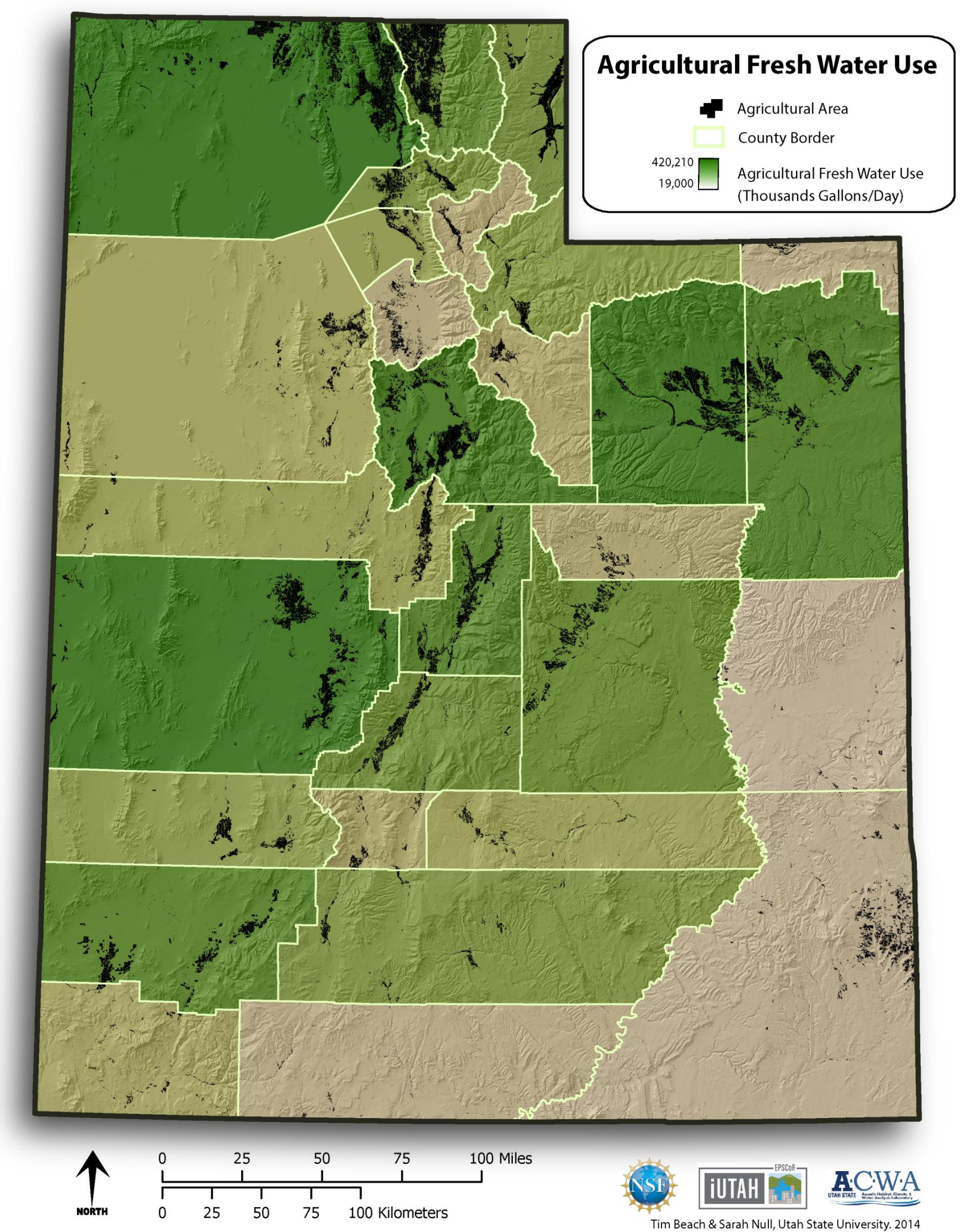
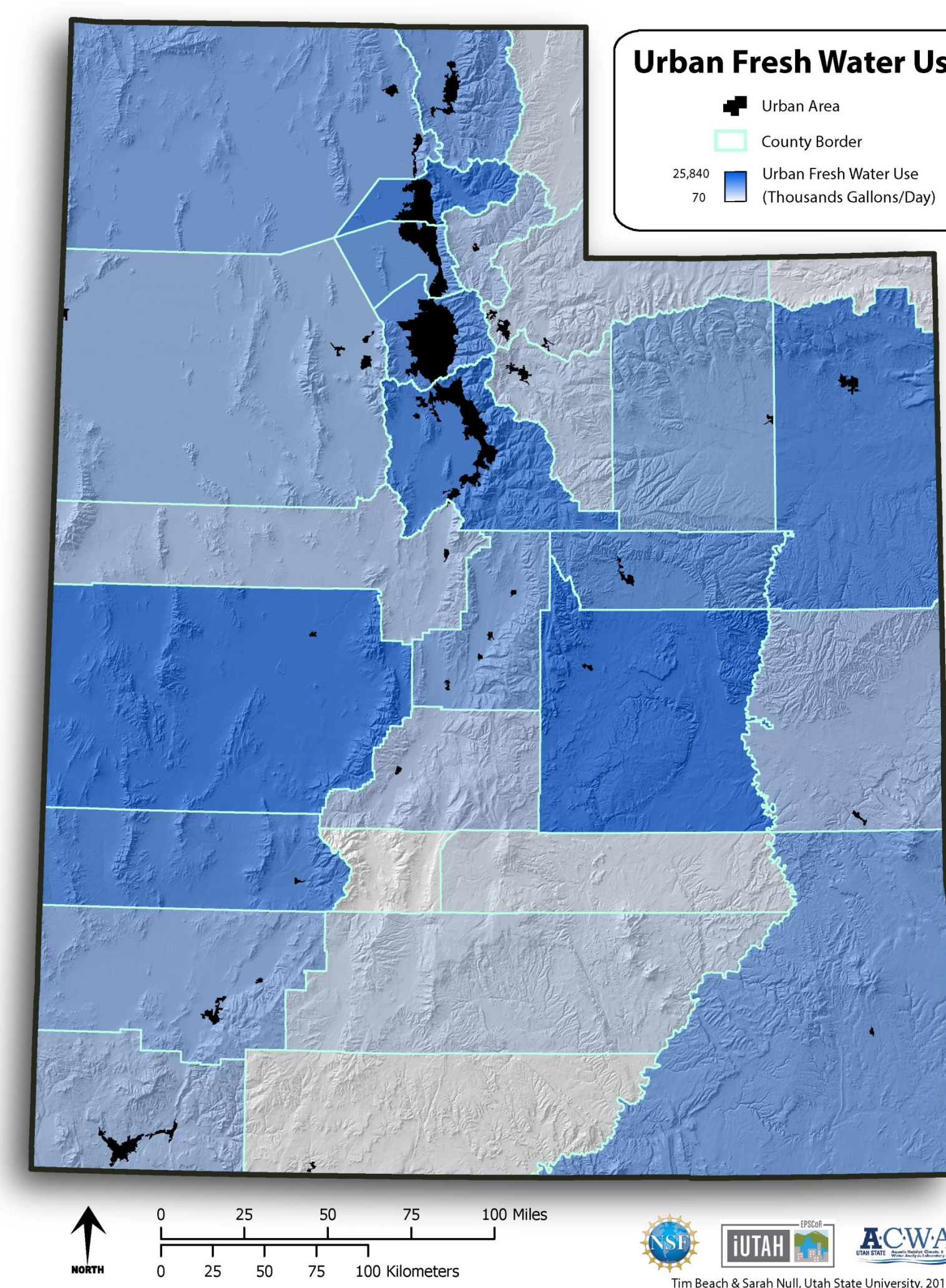
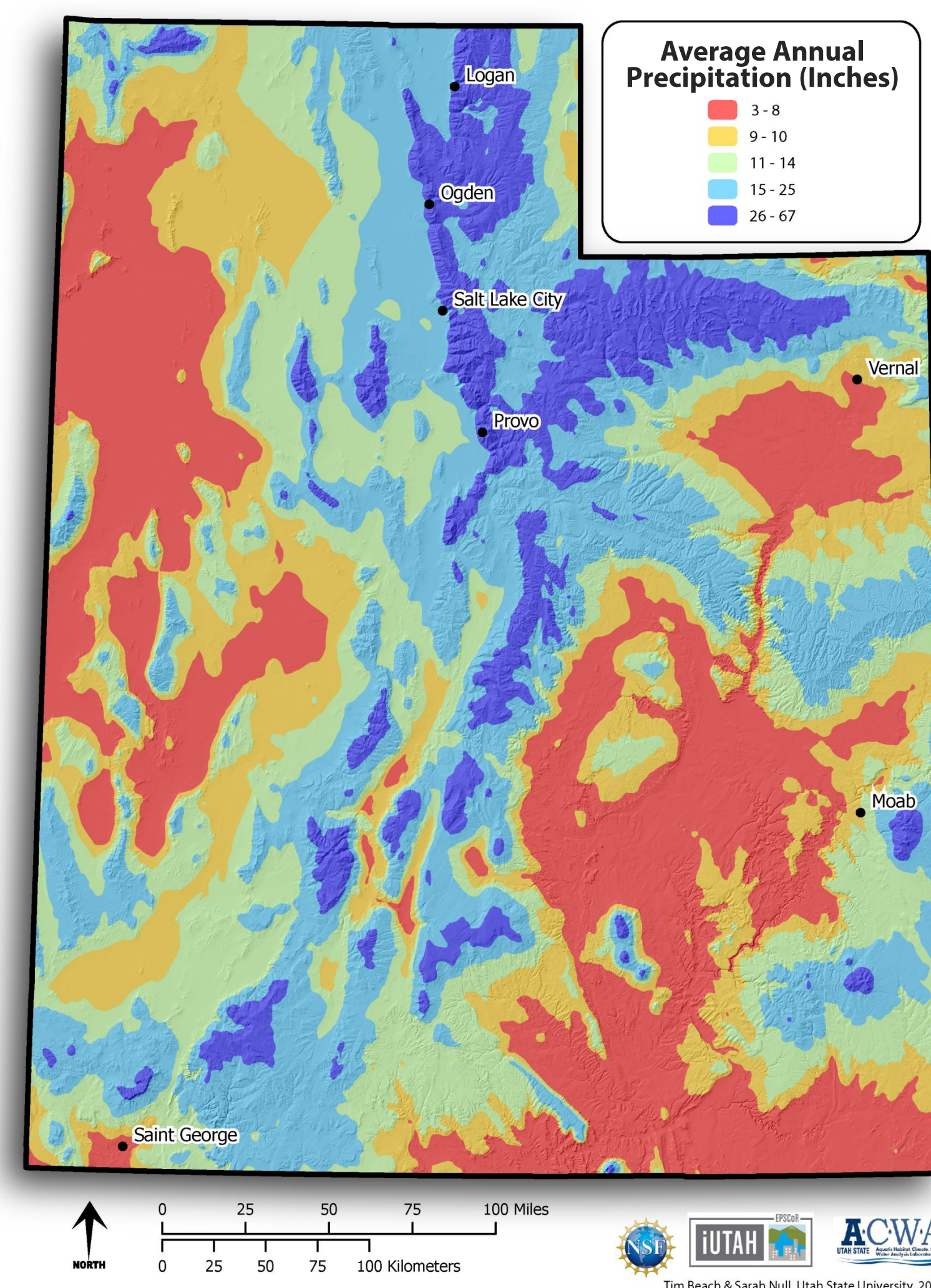
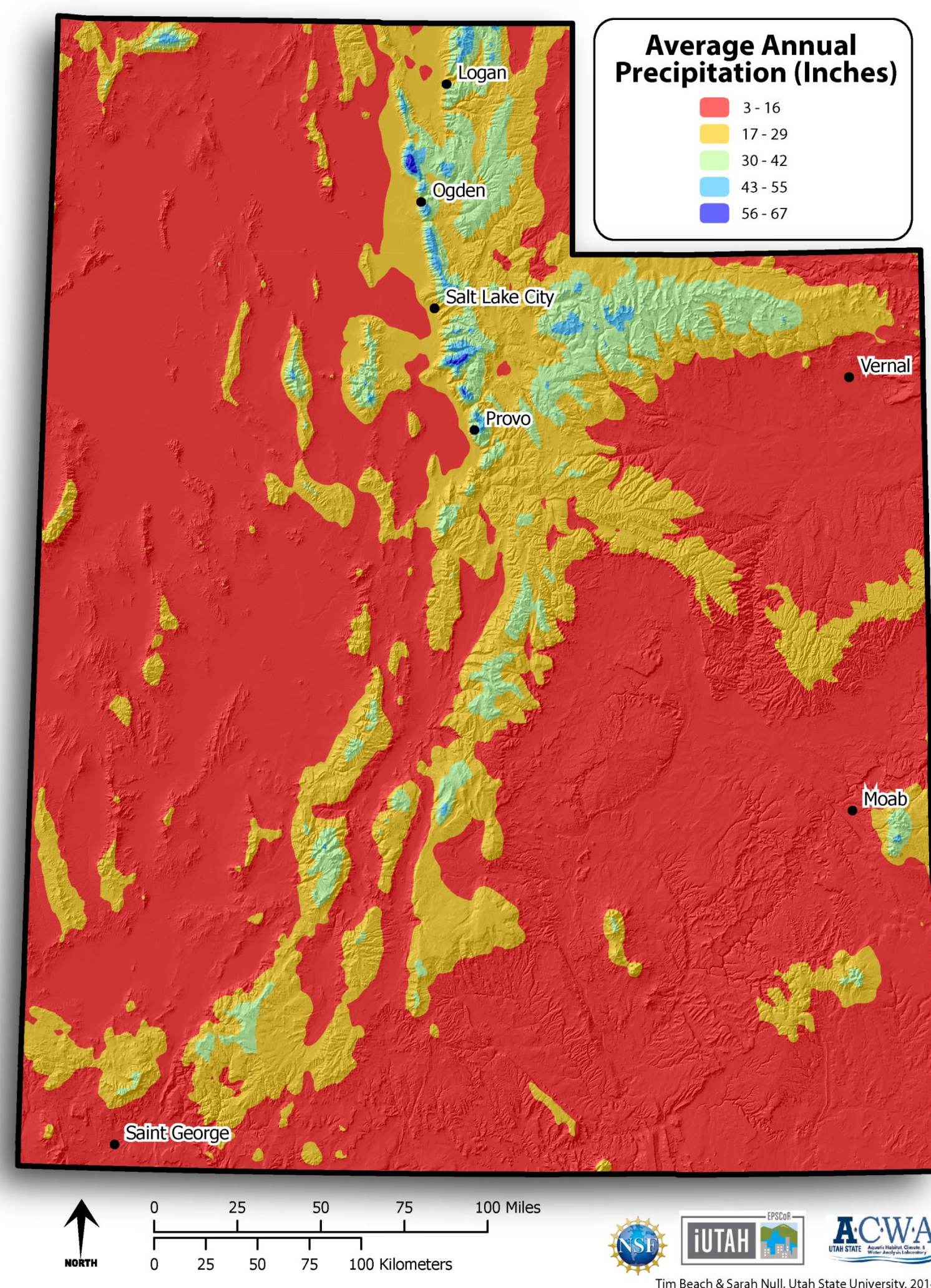
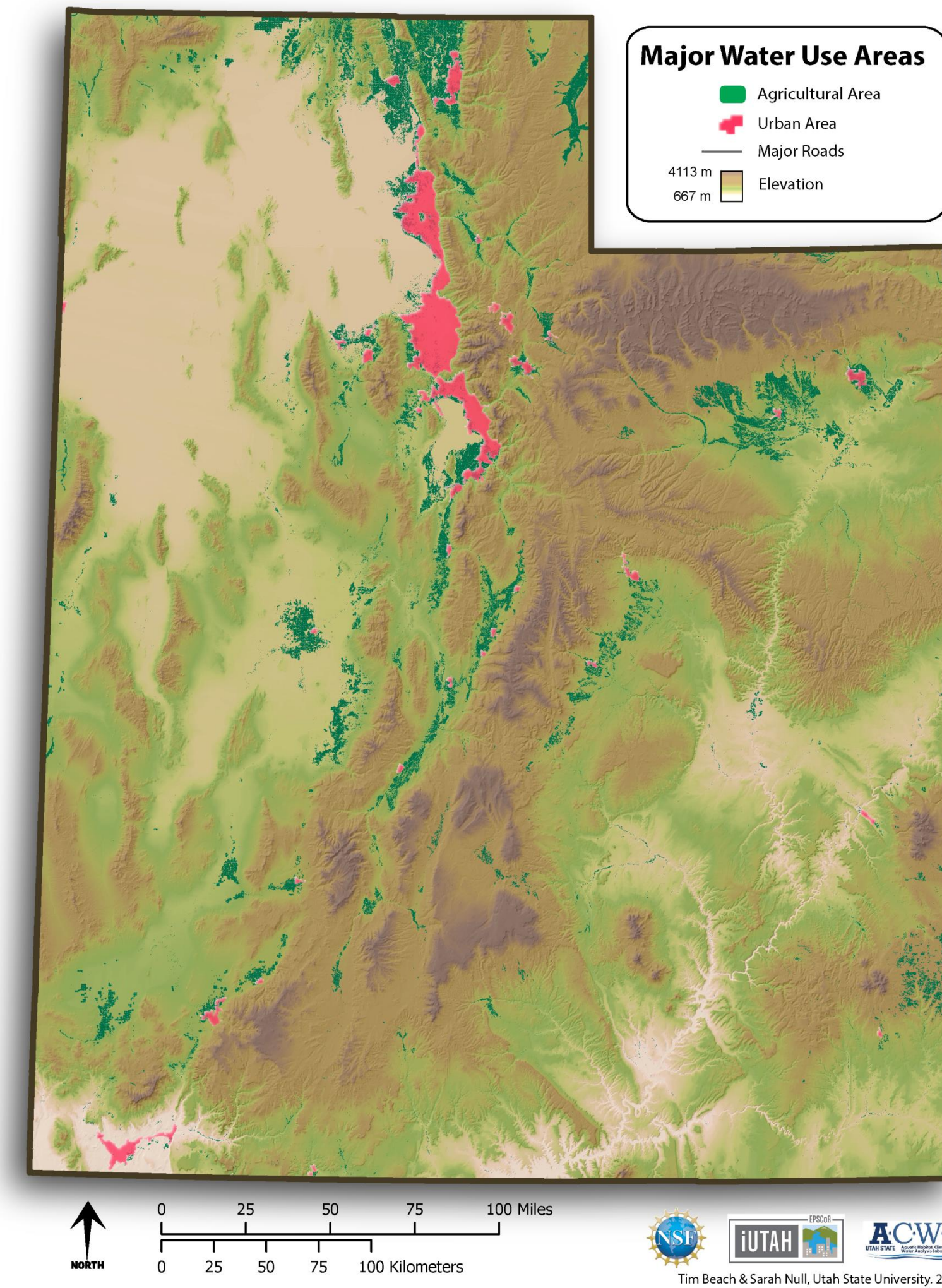
**Objective:** Help the public, academics and policy makers understand water resources through visualization of statewide maps.

**Methods:** ESRI ArcGIS software. Numerous mapping tools & techniques, including:

- Clipping
- Digitizing
- Projecting

**Future Work/Data Needs:** Completion of other statewide maps depicting:

- Average Annual Streamflow
- Urban Growth Projections
- Average Snow Depth
- Groundwater Development
- Potential Evaporation/ Evapotranspiration
- Agricultural Revenue
- Water Quality Concerns



## Data Sources:

- Utah Mapping Portal ([gis.utah.gov](http://gis.utah.gov))
- National Hydrology Dataset ([nhd.usgs.gov](http://nhd.usgs.gov))
- National Land Cover Database ([landcover.usgs.gov](http://landcover.usgs.gov))
- Natural Resource Conservation Service ([datagateway.nrcs.usda.gov](http://datagateway.nrcs.usda.gov))
- National Hydropower Asset Assessment Program ([nhaap.ornl.gov](http://nhaap.ornl.gov))
- National Atlas ([nationalatlas.gov](http://nationalatlas.gov))



Tim Beach  
 Utah State University  
 Watershed Sciences & Earth Systems  
[tim.beach@aggiemail.usu.edu](mailto:tim.beach@aggiemail.usu.edu)

iFELLOWS UNDERGRADUATE RESEARCH PROGRAM





<http://iutahepscor.org>