

# Monitoring River Behavior for Effective Water Management



Sean Bedingfield, Utah State University  
iUTAH Mentors:

Dr. David E. Rosenberg, Utah State University

Dr. R. Ryan Dupont, Utah State University

# Why?

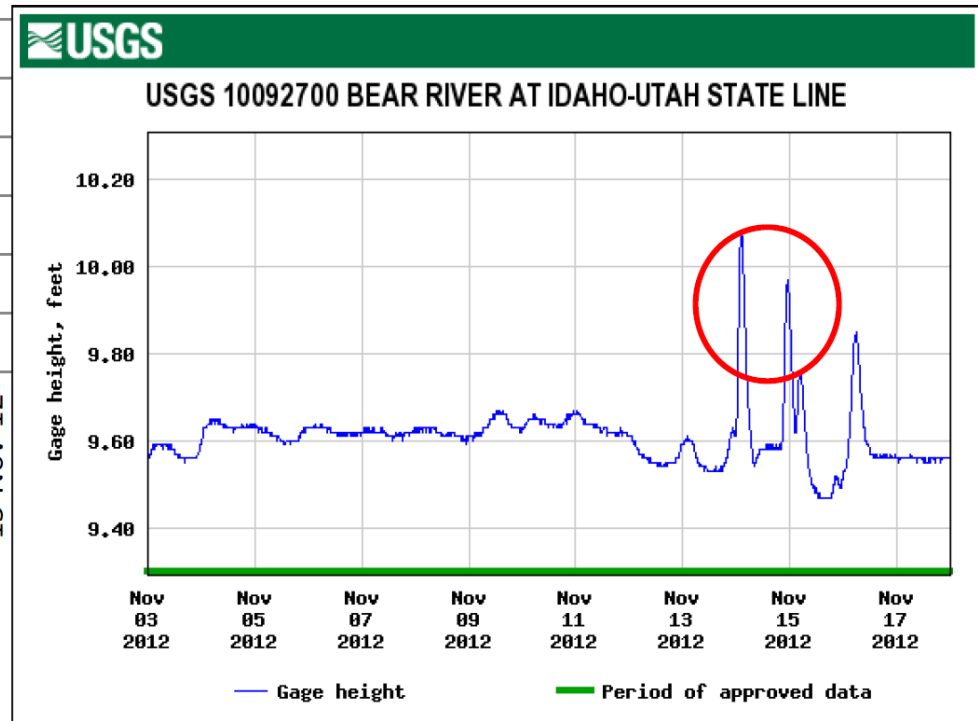
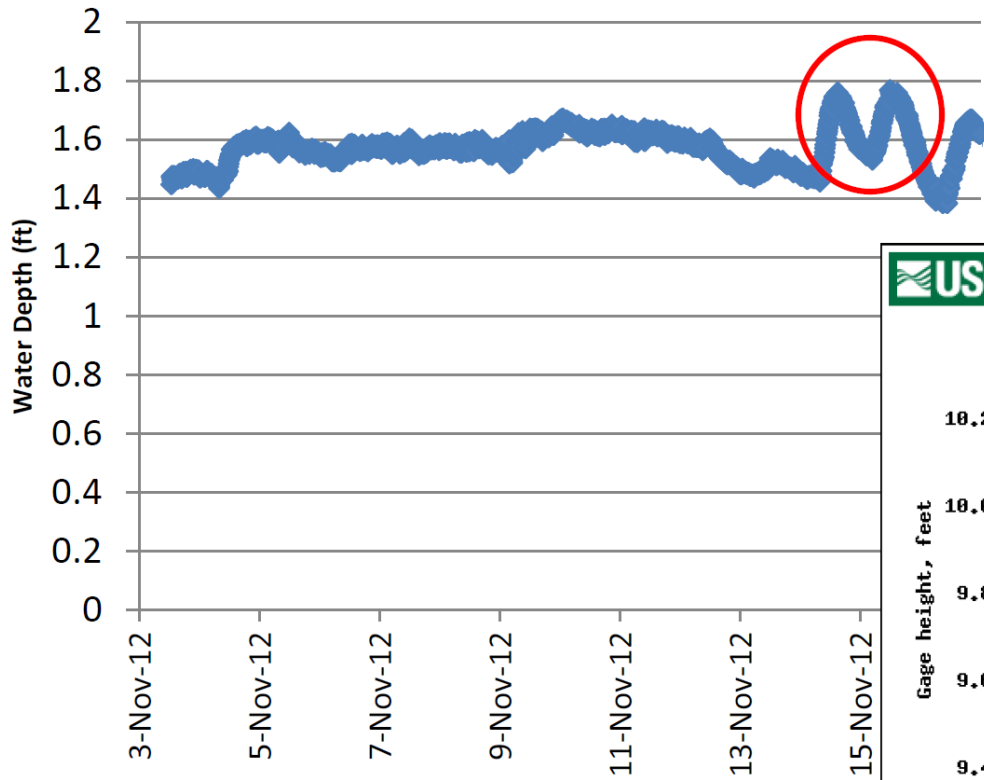
- **Resource Evaluation:**
  - Rising population
  - Unpredictable water supply
- **Environmental impact:**
  - Where water is used
  - When water is used

# Goal

- Organize data involving **river bank level (stage)** and **flow** over time at sites on the Bear and Cub rivers into the following:
  - Depth over Time Database from August '12
  - Monitored Site Cross Sections
  - Stage-Flow Diagram

# Depth Over Time Database:

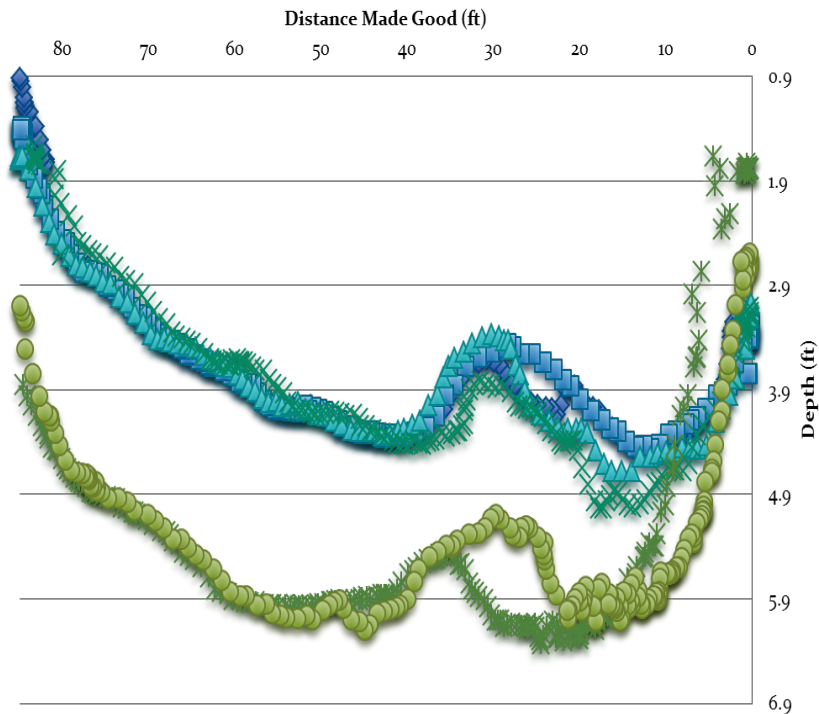
## Water Depths



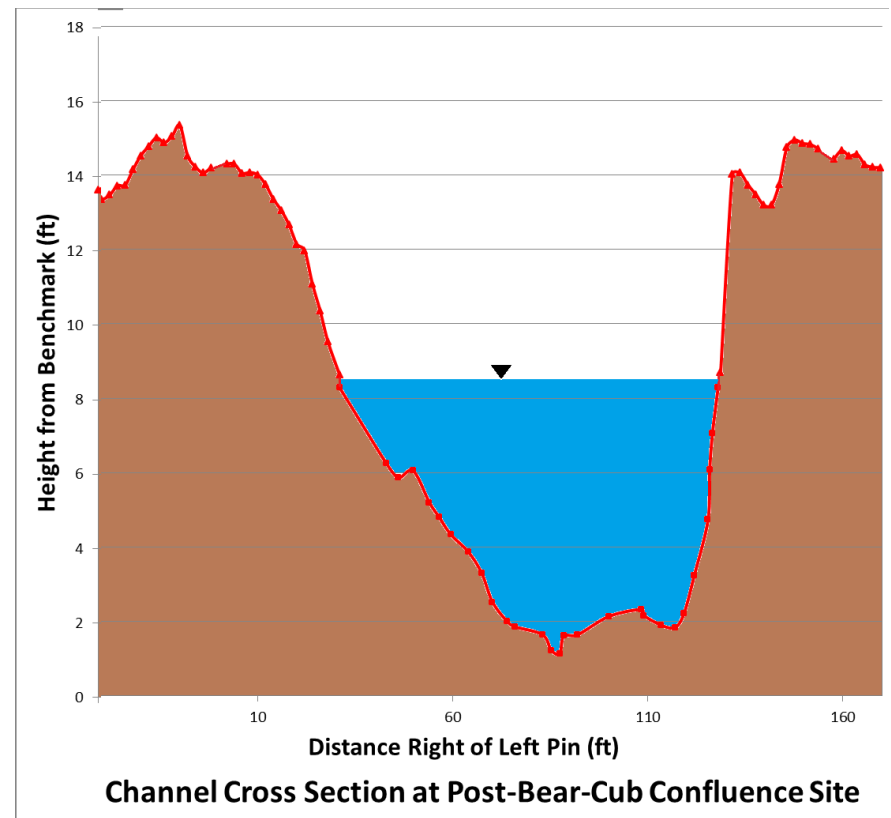
# Monitored Site Cross Section:

## Before

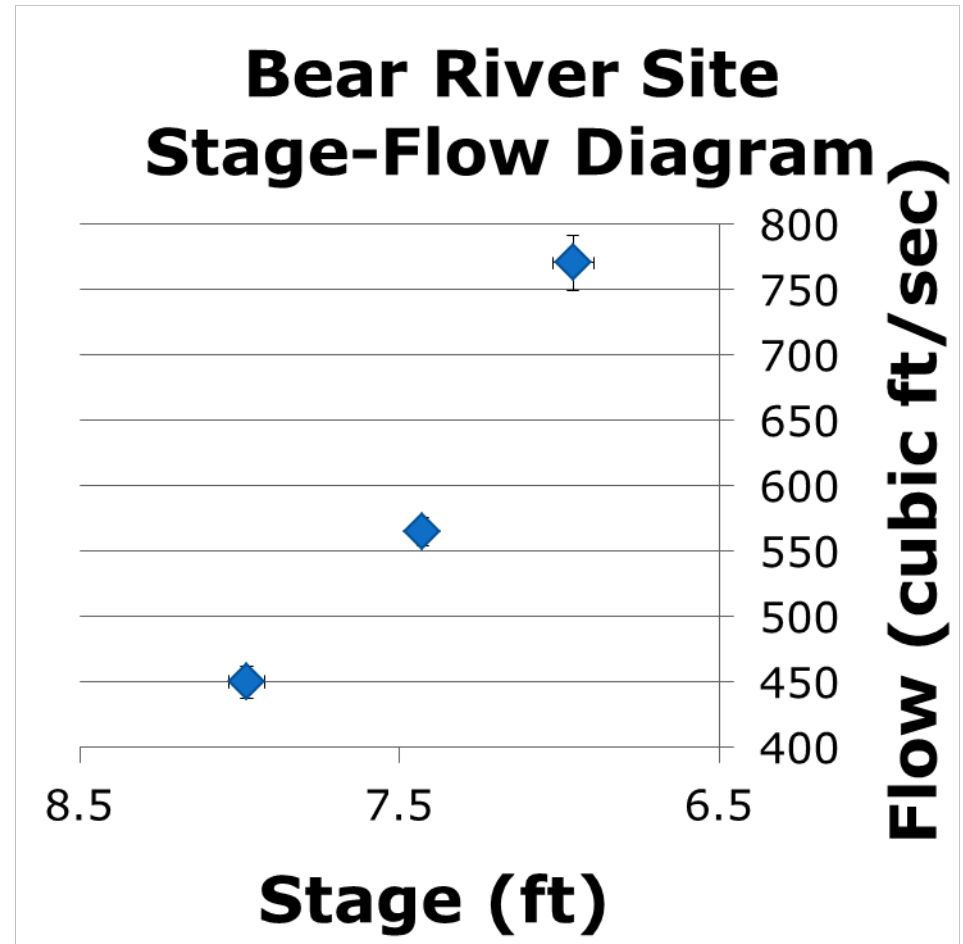
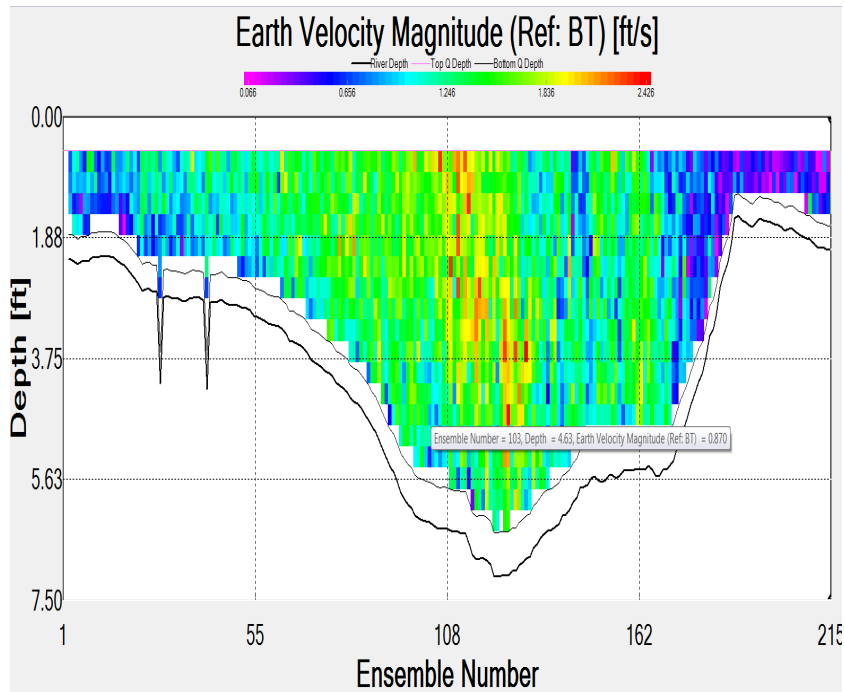
Bear River Transect Data



## After

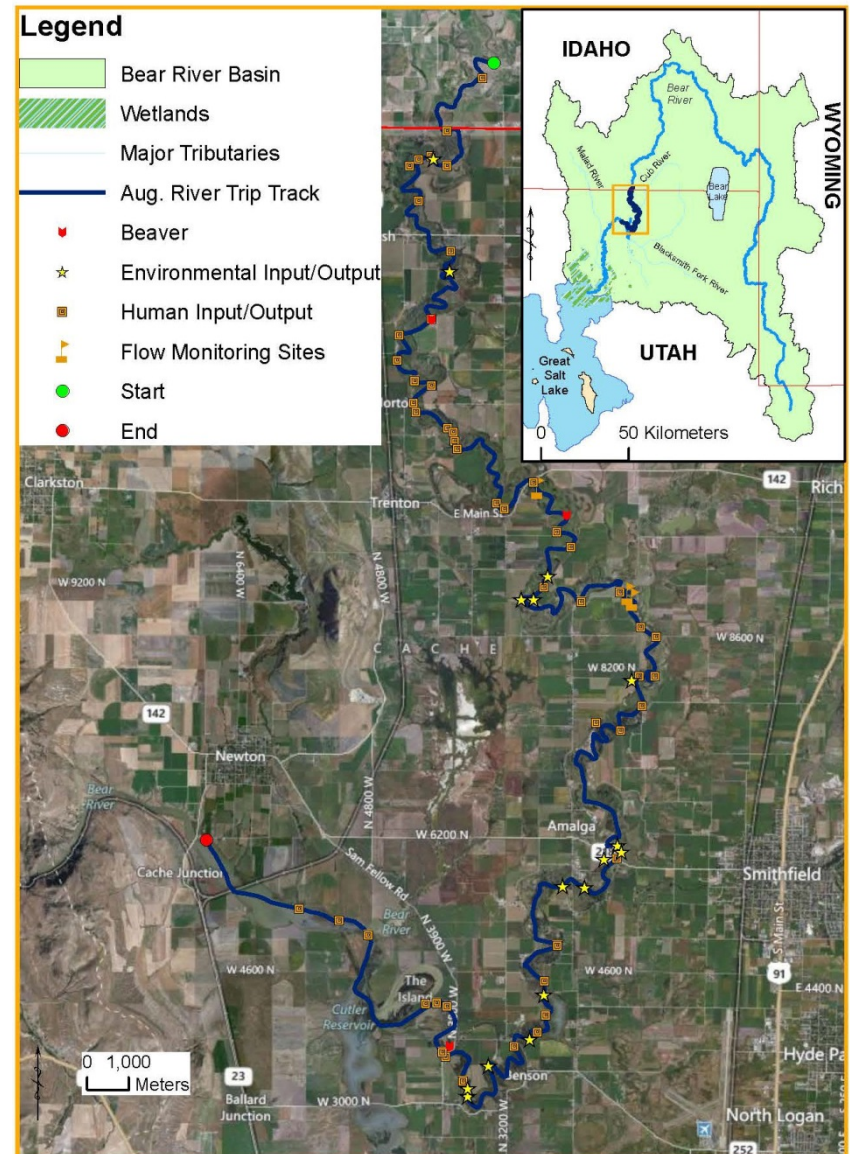


# Stage-Flow Diagram:



# Future Work:

- Collect more data
- Use organized data for modeling
  - Environmental impact on shoreline
  - Resource evaluation
  - Amounts of pollutants at monitored sites





Thank You!  
Questions?