

Enhancing Education and Outreach via the iUTAH Summer Institute

Thomas Walsh

Civil and Environmental Engineering

University of Utah

Christine Pomeroy

Goals

- Serve as the connection among the research focus areas to ensure successful feedback loops
- Facilitate coordination and maximize stakeholder participation through the Summer Institute
- Aid in siting and implementing monitoring instrumentation within the watersheds

Research Methodology

- Extend previous stakeholder insight on the Red Butte Creek watershed to maximize research project benefits, stakeholder education, and Summer Institute development
- Build upon the work completed by an interdisciplinary team of University of Utah graduate students by collecting data needed to address sustainability within the Red Butte Creek watershed

Impact

- Educating stakeholders about the importance of sustainable water resources
- Enhancing research through iUTAH
- Facilitating outreach, education, and coordination through the Summer Institute

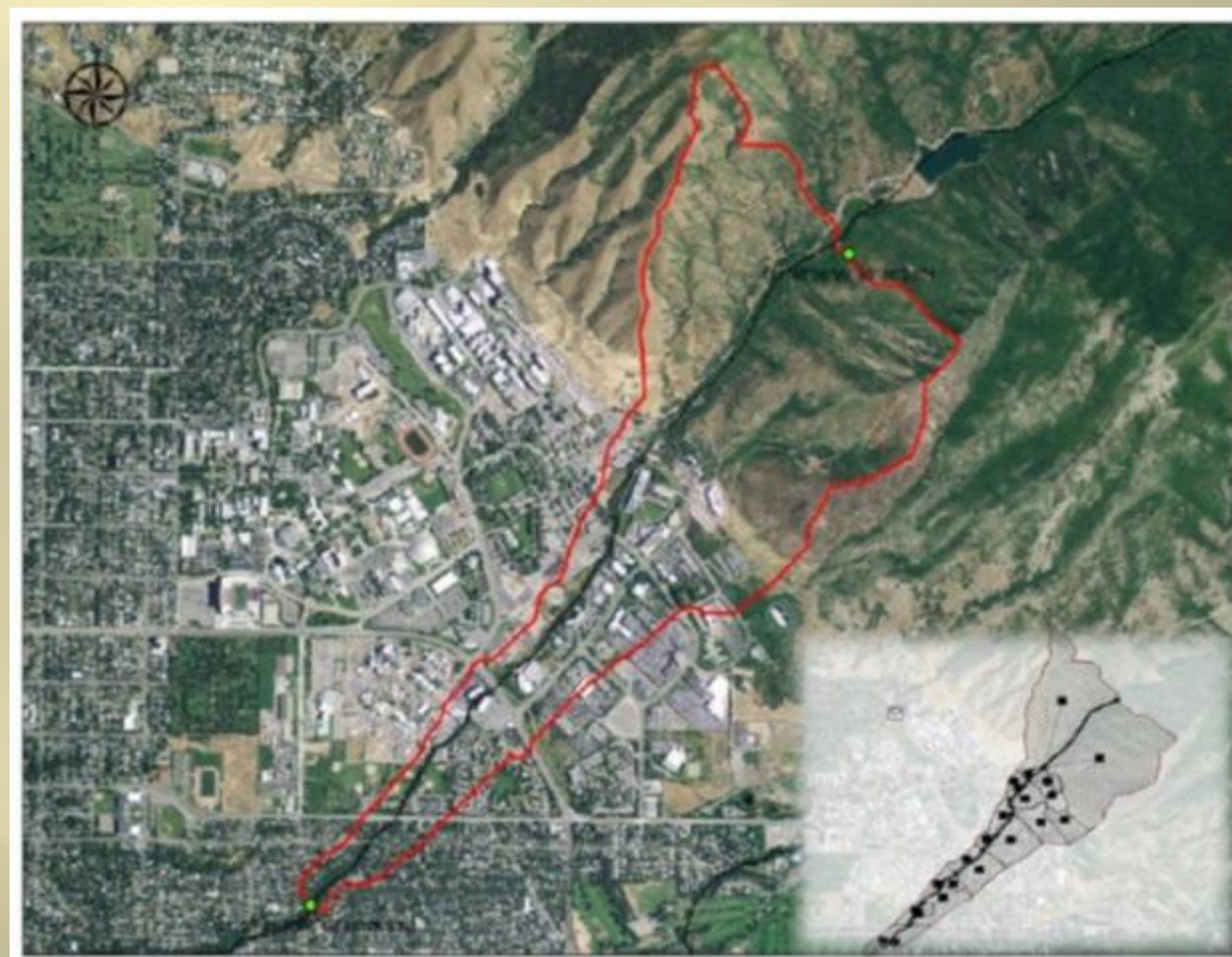


Figure 1. Red Butte Creek Watershed, below the reservoir, as it flows through the University of Utah campus. Inset: SWMM hydrologic model of area.

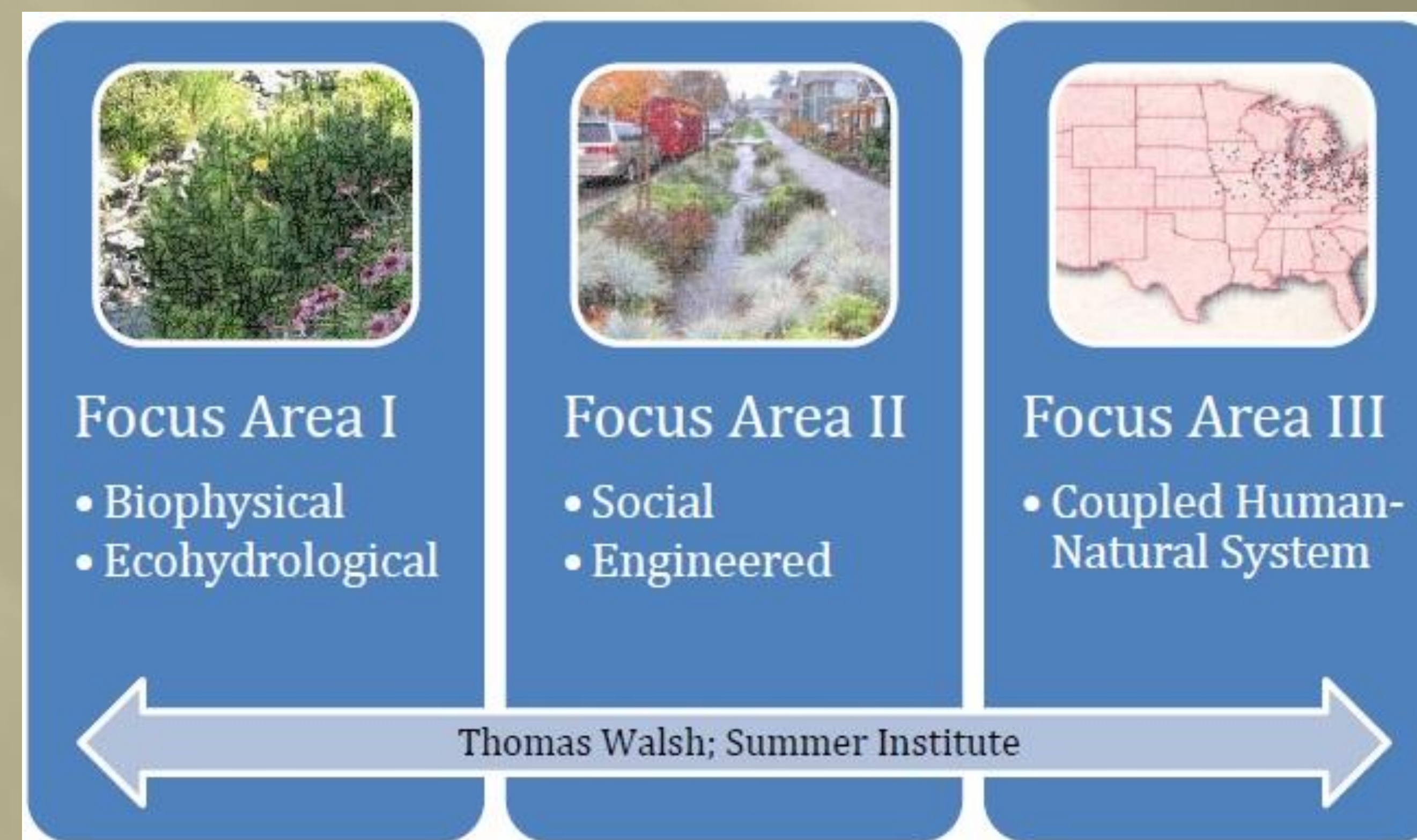


Figure 2. iUTAH focus areas, with Summer Institute serving as a common thread.



Figure 3. Thomas Walsh, Dasch Houdeshel, and Dr. Steve Burian building on-campus stormwater management practices.



thomas.walsh@utah.edu



@UofUTheFlood

GRADUATE RESEARCH FELLOWSHIP PROGRAM



<http://iutahepscor.org>

