

innovative Urban
Transitions and
Aridregion Hydro-
sustainability



iUTAH

Project Management

Rita Teutonico, Associate Director

iUtah EPSCoR Team



iUTAH Research Teams

PI: Todd Crowl, USU
Co-PI: Diane Pataki, UU Co-PI: Doug Jackson Smith, USU
Co-PI: Jim Ehleringer, UU Co-PI: Michelle Baker, USU

Focus Area 1: Biophysical ecohydrologic system

Co-Leads: **Michelle Baker, USU**
Zach Aanderud, BYU
Dave Bowling, UU
Richard Gill, BYU
Jiming Jin, USU
Scott Jones, USU
Bethany Neilson, USU
Reed Obendorfer, CUWCD
Diane Pataki, UU
Sam St. Clair, BYU
Court Strong, UU
Dave Tarboton, USU
Suzanne Walther, UVU

Facility 1
Environmental Network

Focus Area 2: Social and engineered ecohydrologic system

Co-Leads: **Doug Jackson-Smith, USU**
Christine Pomeroy, UU
Daniel Bedford, WSU
Steve Burian, UU
Joanna Endter-Wada, USU
Reid Ewing, UU
Sarah Hinners, UU
Shujuan Li, USU
Zhao Ma, USU
Charles Sims, USU
Carla Trentelman, WSU
Bo Yang, USU

Facility 2
Green Infrastructure

Focus Area 3: Coupled human-natural system

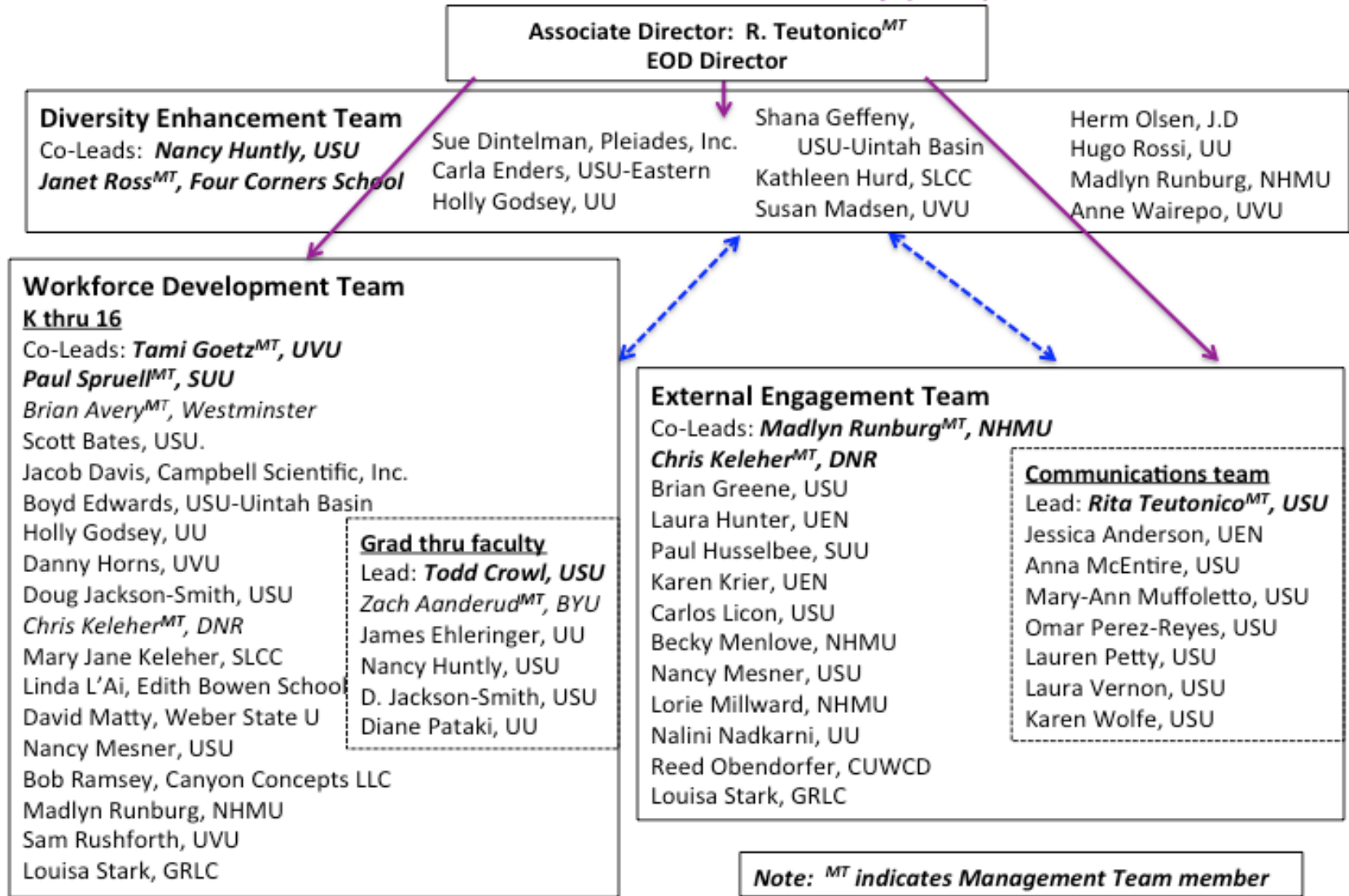
Co-Leads: **Diane Pataki, UU**
Sarah Null, USU
Sarah Hinners, UU
Jeff Horsburgh, USU
Ryan Jensen, BYU
Carlos Licon, USU
Chris Nelson, UU
David Rosenberg, USU
Bo Yang, USU

Facility 3
Environmental Situation Rooms

Cyberinfrastructure
Co-Leads: **Jeff Horsburgh, USU**
Steve Corbato, UU
James Stewart, UEN
Dave Tarboton, USU

Major Education and Research Infrastructure: Jim Ehleringer, UU

iUTAH Education, Outreach, Diversity (EOD) Teams



iUtah EPSCoR Project Management



o Partners: iUTAH Partners (so far)

- Brigham Young University
- Central Utah Project
- Central Utah Water Conservancy District
- Dixie State College
- Envision Utah
- Governor's Office Economic Development
- Governor's Office Planning & Budget
- KUEN Public Television
- Salt Lake City School District
- Salt Lake Community College
- Salt Lake County Planning and Development
- Southern Utah University
- University of Utah
- USDA NRCS
- USTAR
- Utah Center for Science and Math Education
- Utah Department of Environmental Quality
- Utah Educational Network
- Utah Field Station Network
- Natural History Museum of Utah
- Utah Rural Schools Association
- Utah Society for Environ. Sci. Education
- Utah State Office of Education
- Utah State University
- Utah Valley University
- Wasatch Front Regional Council
- Westminster College
- Women's Tech Council



Goals

- Successful integration, coordination, and implementation of all iUTAH activities.



Objectives

- Establish Management Team to coordinate and integrate all iUTAH activities.
- MT with distributed leadership across institutions, disciplines, gender, and rank.
- MT to include research and EOD team leads, and faculty from the research universities and the primarily undergraduate institutions statewide.
- MT to oversee the implementation and utilization of new facilities by scientists, educators and stakeholders.

iUtah EPSCoR Project Management

iUTAH



iUTAH Management Team^{MT}

PI: Todd Crowl, USU

Co-PI: Diane Pataki, UU

Co-PI: Jim Ehleringer, UU

Co-PI: Doug Jackson Smith, USU

Co-PI: Michelle Baker, USU

Assoc. Director: R. Teutonico, USU

Zach Aanderud, BYU

Brian Avery, Westminster

Dan Bedford, Weber St

Tami Goetz, UVU

Jeff Horsburgh, USU

Chris Keleher, UDNR

Christine Pomeroy, UU

Paul Spruell, SUU

Janet Ross, Four Corners School

Madlyn Runburg, NHMU

Research Focus Areas

PI: Todd Crowl, USU

Co-PI: Diane Pataki, UU

Co-PI: Jim Ehleringer, UU

Co-PI: Doug Jackson Smith, USU

Co-PI: Michelle Baker, USU

Focus Area 1: Biophysical
ecohydrologic system

Co-Leads: *Michelle Baker, USU*
Zach Aanderud, BYU

Focus Area 2: Social and engineered
ecohydrologic system

Co-Leads: *Doug Jackson-Smith, USU*
Christine Pomeroy, UU

Focus Area 3: Coupled human-
natural system

Co-Leads: *Diane Pataki, UU*
Sarah Null, USU

Education, Outreach, Diversity (EOD) Teams

NSF EPSCoR Associate Director
EOD Director

Diversity Enhancement Team

Workforce Development Team

External Engagement Team



Activities

- BI weekly 'meetings' via video- or tele-conference
- Quarterly in-person meetings
- Review of proposals for REU, graduate student and PUI faculty research opportunities.
- Coordination meetings with Diversity Enhancement Team



Possible Challenges

- Establishing a common vision
- Coordination across geographic, disciplinary, institutional, and cultural boundaries
- Communication – vocabularies and technologies
- Integration among research, education , outreach, and diversity activities